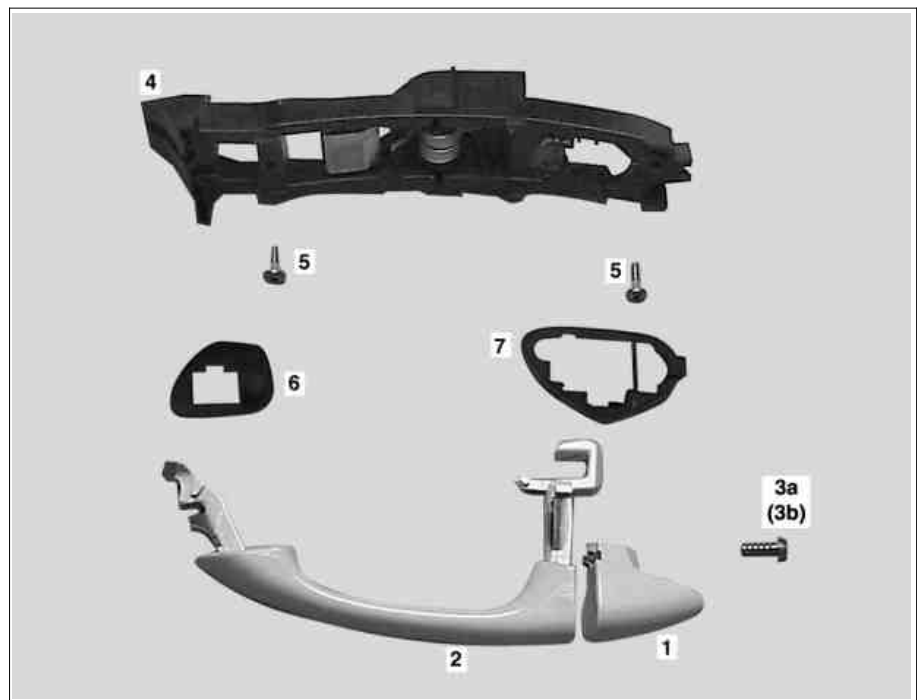


Shown on model 203.0

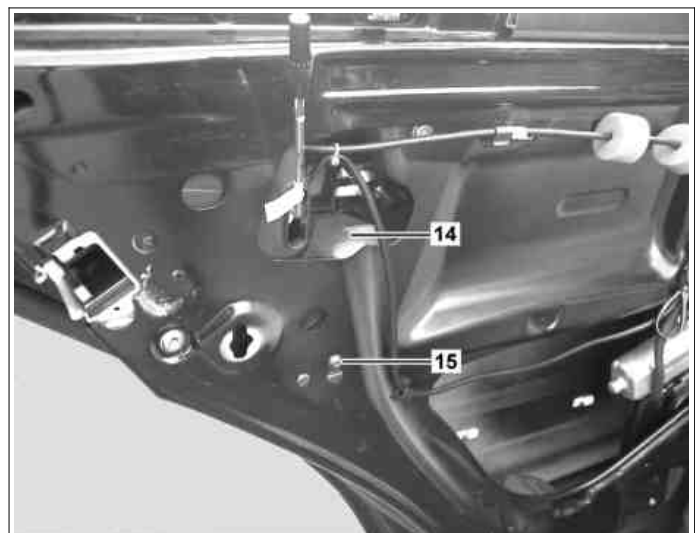
- 1 Cover
- 2 Handle
- 3a Bolt cover (left-hand thread)
- 3b Bolt cover (right-hand thread)
- 4 Bearing bracket
- 5 Bearing bracket bolt
- 6 Left base
- 7 Right base



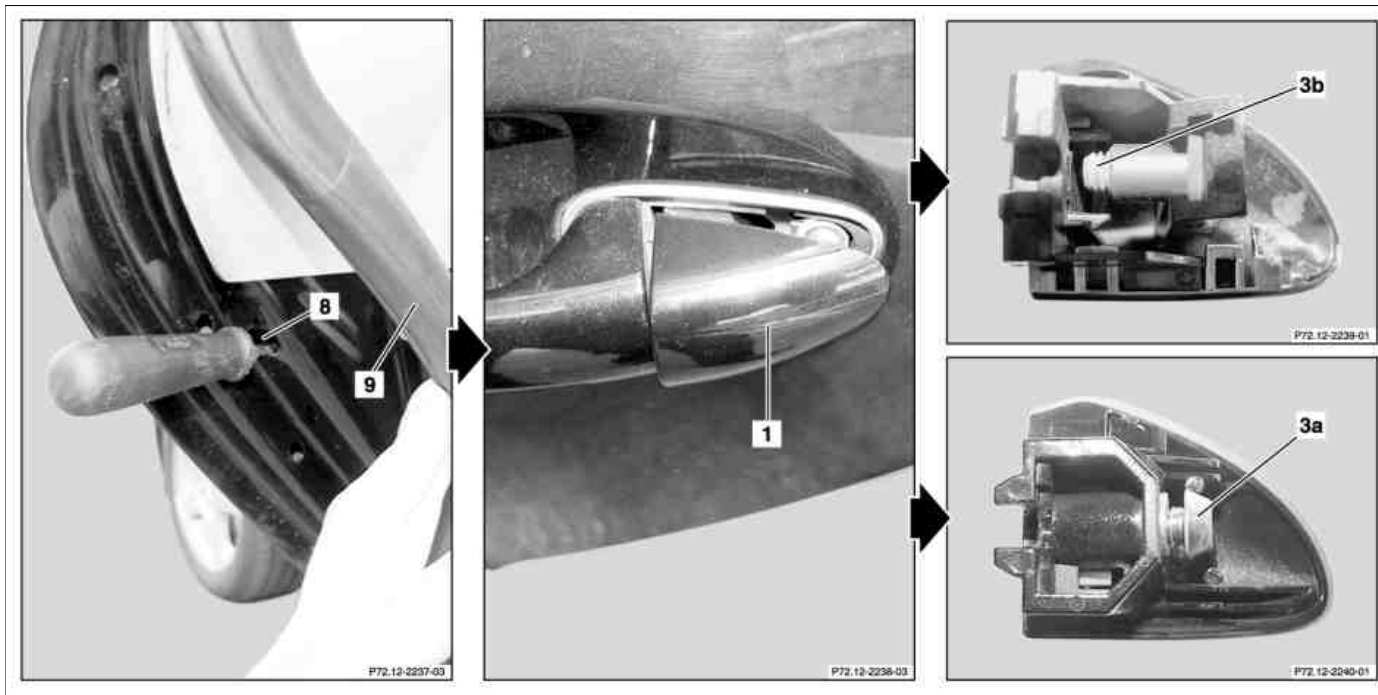
P72.12-2093-06

Shown on model 203.0

- 14 Polystyrene insert



P72.12-2128-11



P72.12-2236-09

Shown on model 203.0

3a Bolt (left-hand thread)
3b Bolt (right-hand thread)

8 Opening
9 Door sealing frame

1 Cover

		Remove/Install	
1		Remove door lining from rear door	AR72.12-P-1010P
2.1		Remove rear door sidebag unit	With sidebag in rear, left and right, code 293 AR91.60-P-0692P
3		Pull foil off of inner door panel	
4		Remove styrofoam insert (14)	Installed as two-piece element
5		Unclip door sealing frame (9)	In area of door lock.
6.1		Loosen bolt (left-hand thread) (3a) in opening (8) and pull out cover (1) Notes on bolts with right and left-hand threads on rear door handle	Left-hand thread on Classic and Avantgarde equipment version Turn to left (counterclockwise) (3a) to loosen bolt Left-hand thread: Bolt (left-hand thread) (3a) is turned against a stop. Do not tighten bolt too tightly! Model 203 Bolt, waf 3 mm rear door handle AH72.12-P-1002-01P *BA72.12-P-1004-01A
6.2		Loosen bolt (right-hand thread) (3b) in opening (8) and pull out cover (1) Notes on bolts with right and left-hand threads on rear door handle	Right-hand thread on Elegance equipment version Model 203 Bolt, waf 3 mm rear door handle AH72.12-P-1002-01P *BA72.12-P-1004-01A
7		Take out cover (1)	
8		Pull handle (2) to the rear out of bearing bracket (4) and take off	
9		Remove left subsurface (6) and right subsurface (7)	
10		Unscrew bolts from bearing bracket (5)	
11		Take out bearing bracket (4) through assembly opening of door	
12		Install in the reverse order	
13		Perform function check	

Rear door

Number	Designation	Model 203

BA72.12-P-1004-01A	Bolt, waf 3 mm rear door handle	Nm	1.5
--------------------	---------------------------------	----	-----